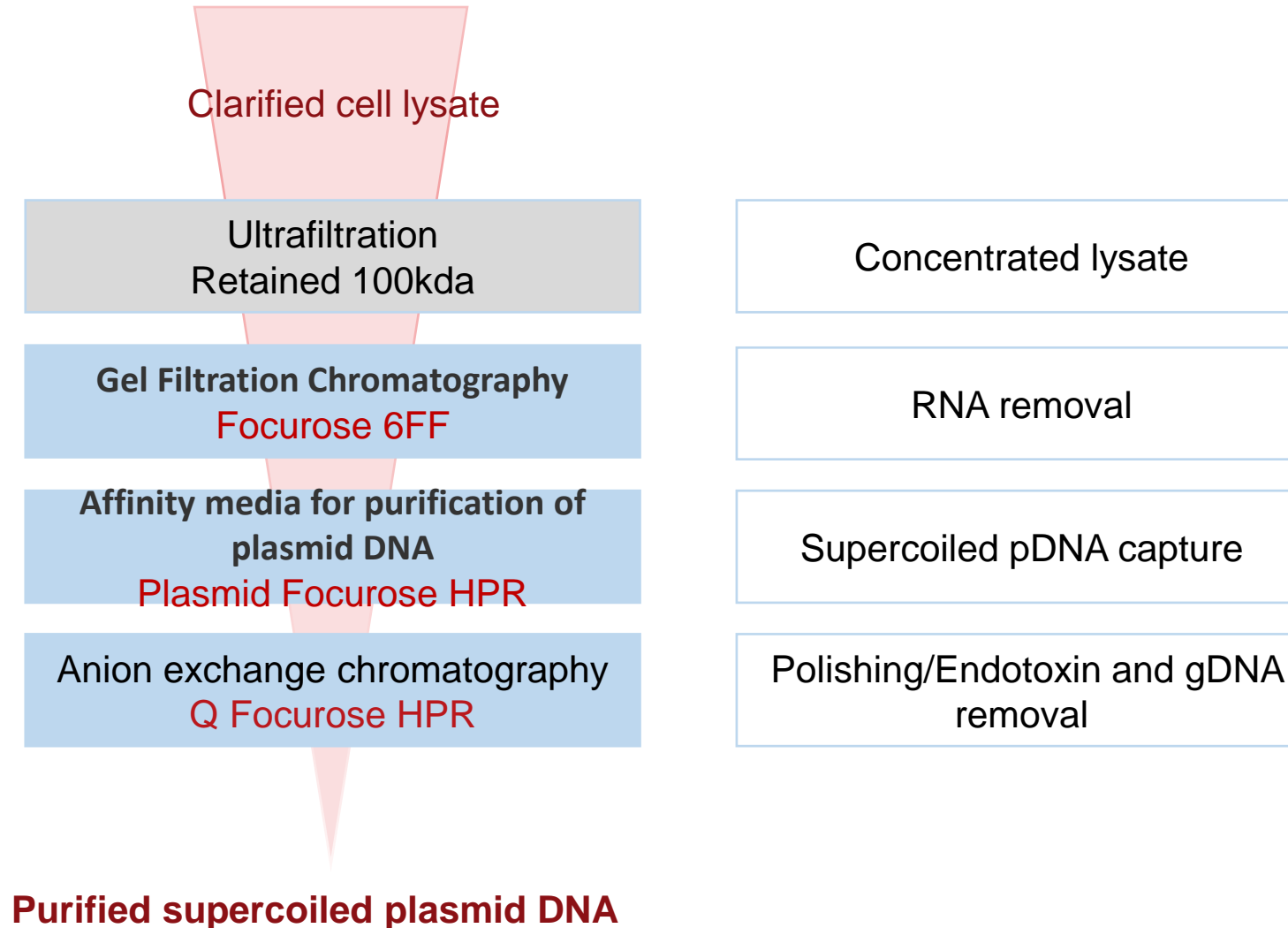


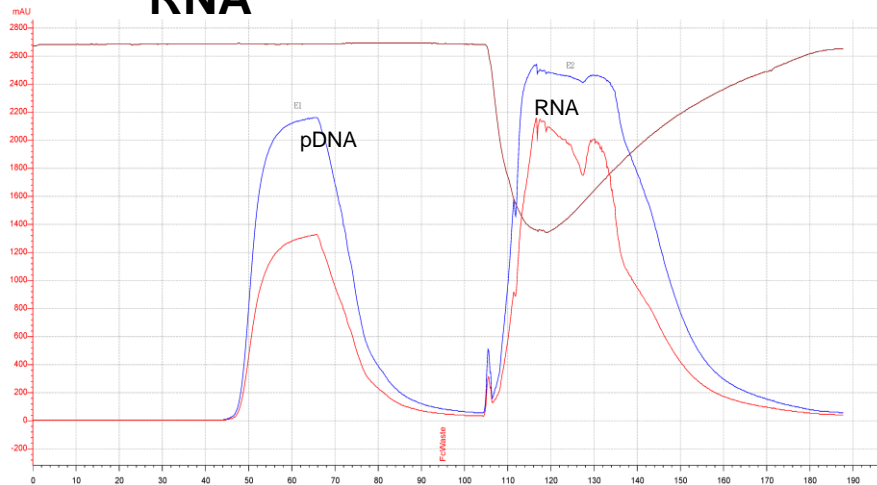
Supercoiled Plasmid DNA Purification Process



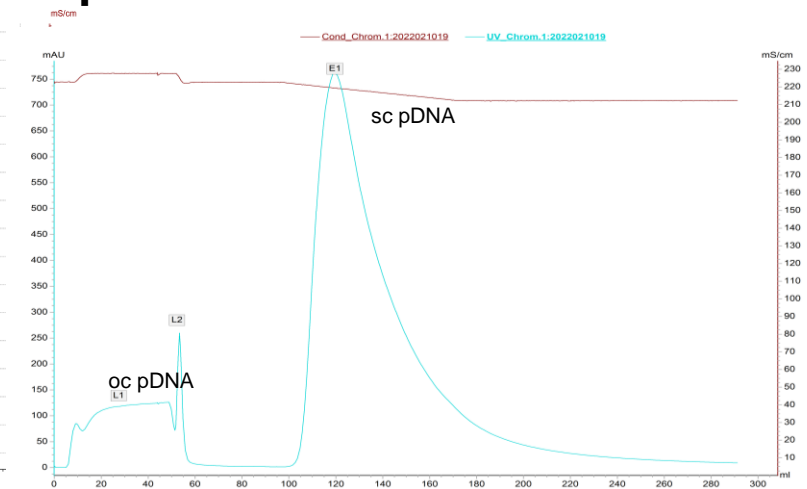
Supercoiled Plasmid DNA Purification Process



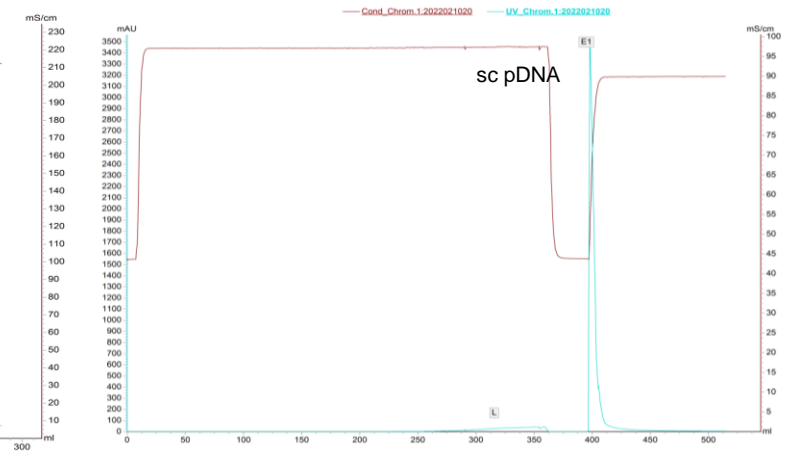
**Step 1:
Focurose 6FF
Separate pDNA and
RNA**



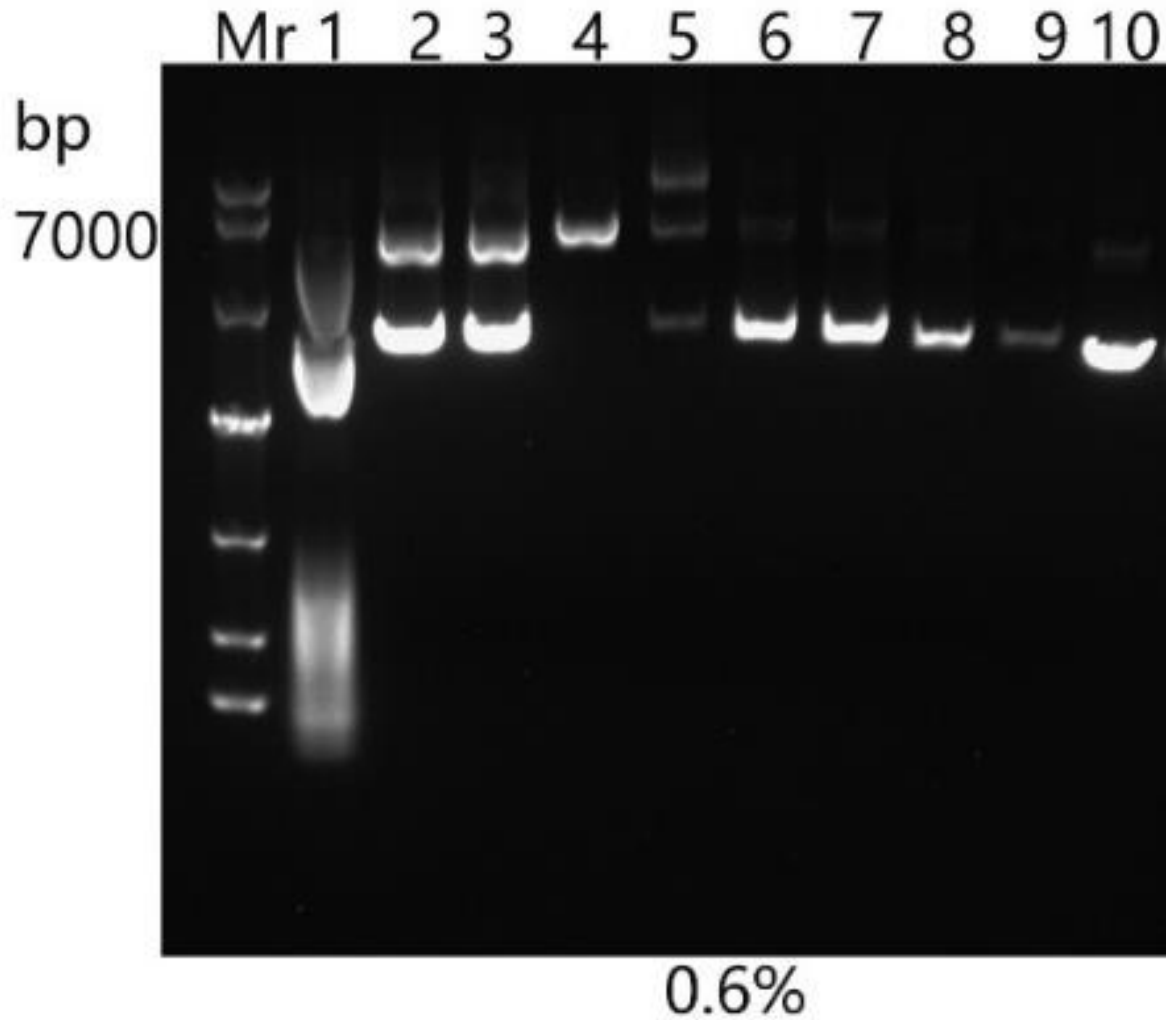
**Step 2:
Plasmid Focurose HPR
Separate oc pDNA and sc
pDNA**



**Step 3:
Q Focurose HPR
Endotoxin and gDNA
removal**



Electrophoresis Result Analysis



1. Dilution of stock solution
2. Focurose 6FF-dilution of elution 1
3. Plasmid Focurose HPR -dilution of stock solution
4. Plasmid Focurose HPR -dilution of flow through 1
5. Plasmid Focurose HPR -dilution of flow through 2
6. Plasmid Focurose HPR -dilution of elution 1
7. Q Focurose HPR -stock solution
8. Q Focurose HPR -dilution of stock solution
9. Q Focurose HPR -dilution of flow through
10. Q Focurose HPR-dilution of elution 1

Analysis of The Purified Samples



Inspection type	Inspection item	Inspection method	Result
Normal	Liquid appearance	Visualization	Colorless clear liquid
	pH	Potentiometry	7.00
Concentration	pDNA conc.	UV	200.50ng/ul
	% sc pDNA	Agarose gel electrophoresis	> 85%
	A260/280	UV	1.97
Purity	Residual RNA	Agarose gel electrophoresis	Not visible
	Residual gDNA	Agarose gel electrophoresis	Not visible
	Residual host cell protein	Bradford	0mg/ml